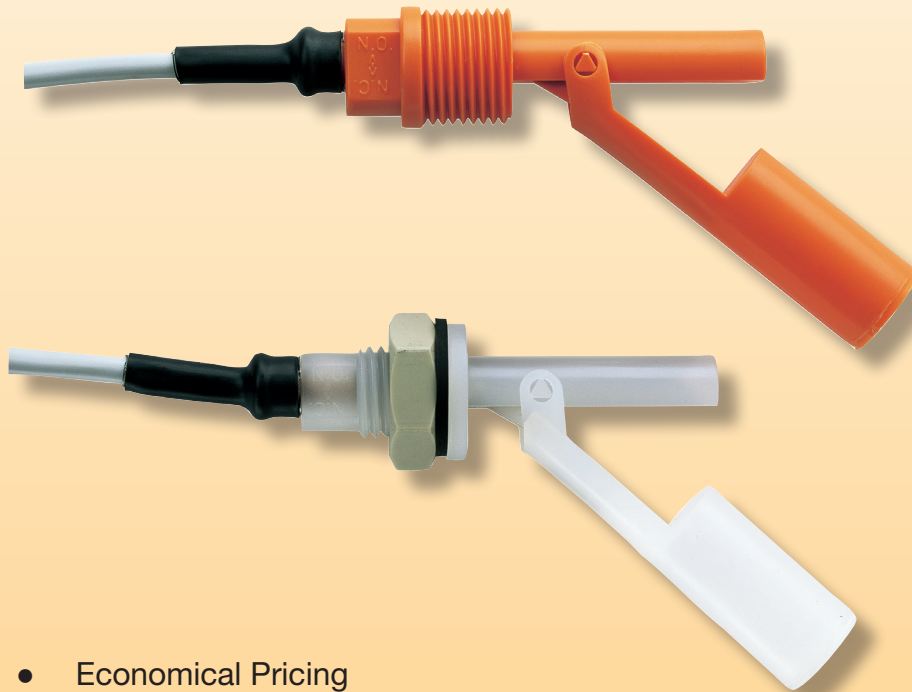


Level Switch



measuring
•
monitoring
•
analyzing

NKP



- Economical Pricing
- Excellent Chemical Resistance
- Compact
- Easy to Install
- Hermetically Sealed Reed Switch
- NEMA 6 Protection
- Ideal for Tanks with Inaccessible Tops or Bottoms



KOBOLD companies worldwide:

ARGENTINA, AUSTRIA, BELGIUM, BULGARIA, CANADA, CHILE, CHINA, COLOMBIA, CZECH REPUBLIC, EGYPT, FRANCE, GERMANY, GREAT BRITAIN, HUNGARY, INDIA, INDONESIA, ITALY, MALAYSIA, MEXICO, NETHERLANDS, PERU, POLAND, ROMANIA, SINGAPORE, SOUTH KOREA, SPAIN, SWITZERLAND, TAIWAN, THAILAND, TUNISIA, TURKEY, USA, VIETNAM

KOBOLD Instruments, Inc.
1801 Parkway View Drive
Pittsburgh, PA 15205
☎ Main Office:
1.800.998.1020
1.412.788.4890
✉ info@koboldusa.com
www.koboldusa.com

Description

The KOBOLD NKP is an economical level switch available in polypropylene or PVDF wetted materials allowing for wide compatibility with many aggressive liquids. It is distinguished by its repeatable response, compact size, and high capacity reed switch and is designed for installation into the sidewalls of tanks. The plastic float, containing a magnet, moves as the liquid level rises above or falls below the switchpoint. When the magnet moves close to the reed contact, the switch closes, completing the circuit. The switch function may be changed from normally open to normally closed by merely rotating it 180°. A simple and functional design makes the NKP virtually maintenance free.

Specifications

Materials

Float: Polypropylene or PVDF

Housing: Polypropylene or PVDF

Seal (Bulkhead Only)

PP: NBR

PVDF: FKM

Connection Fitting: 1/2" NPT or M16 Bulkhead

Orientation: Horizontal ± 30°

Max. Temperature

Polypropylene: 176 °F

PVDF: 212 °F

Max. Pressure: 145 PSIG

Min. Liquid Density

Polypropylene: 0.6 S.G

PVDF: 0.95 S.G.

Reed Switch

Max. Voltage: 230 VAC/VDC

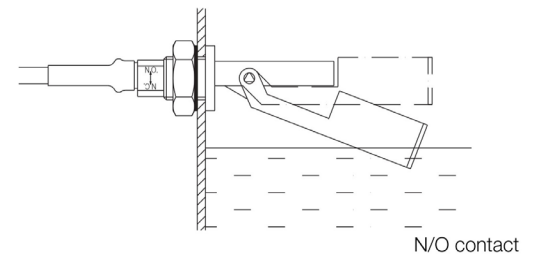
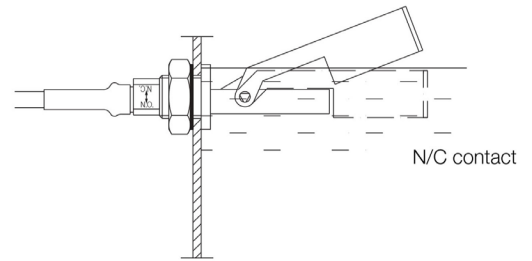
Max. Current: 2 A

Max. Power: 40 VA

Cable: 3 ft, PVC-clad, AWG 20/2

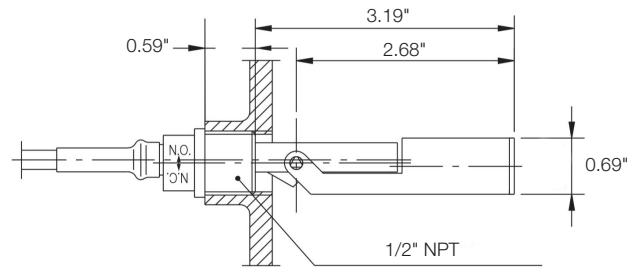
Protection: NEMA 6 / IP68

Switch Function

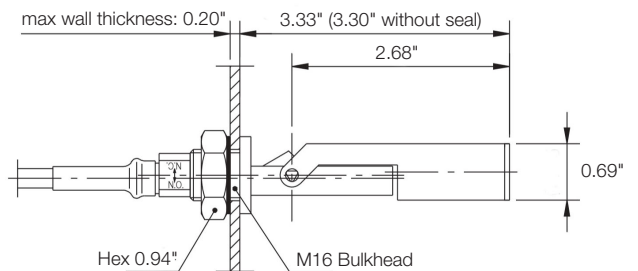


Dimensions

NPT Fitting



Bulkhead Fitting



Order Details (Example: NKP-2501)

| Fitting | Polypropylene | PVDF |
|---------------------------------------|---------------------|----------|
| 1/2" NPT | NKP-2401 | NKP-2501 |
| M16 Bulkhead | NKP-6401 | NKP-6501 |
| Optional Cable Length (3 ft Standard) | | |
| ..EC10 | 10 ft (3 m) Cable | |
| ..EC15 | 15 ft (5 m) Cable | |
| ..EC21 | 21 ft (6.5 m) Cable | |